	<p>HTTPS Certificate Installation Instructions for Delair Etsiline CommPact 0281413 Dehydrator</p> <p>Uncontrolled on Paper</p>	<p>NUMBER: OPP-00030 REVISION: B EFFECTIVE DATE: 4-7-2026 PAGE 1 of 11</p>
----------------------------------------------------------------------------------	--------------------------------------------------------------------------------------------------------------------------------------------	----------------------------------------------------------------------------------------

Introduction

This document provides step-by-step instructions for installing an HTTPS certificate on a PC used to control the Delair Etsiline CommPact Dehydrator running firmware version 1.11.04. The certificate installation is a one-time process per PC. In addition, this guide outlines the procedure for selecting and configuring the appropriate SNMP protocol.



Delair Etsiline CommPact 0281413 Dehydrator




HTTPs Certificate Installation Instructions for Delair Etsiline CommPact 0281413 Dehydrator

Uncontrolled on Paper

NUMBER: OPP-00030
REVISION: B
EFFECTIVE DATE: 4-7-2026
PAGE 1 of 11

Installation


1. Connect the PC to the unit. An ethernet crossover cable is required to connect directly to the unit if not using a network switch, hub or router.
2. Open a web browser and proceed to the homepage of the unit.
 - a. Default IP Address: 192.168.0.250
3. The homepage will be flagged as unsafe until the certificate is installed. Choose to proceed to the IP address.



Your connection is not private

Attackers might be trying to steal your information from **192.168.0.250** (for example, passwords, messages, or credit cards). [Learn more about this warning](#)

NET::ERR_CERT_AUTHORITY_INVALID

 [Turn on enhanced protection](#) to get Chrome's highest level of security

[Hide advanced](#) [Back to safety](#)

This server could not prove that it is **192.168.0.250**; its security certificate is not trusted by your computer's operating system. This may be caused by a misconfiguration or an attacker intercepting your connection.

[Proceed to 192.168.0.250 \(unsafe\)](#)



HTTPS Certificate Installation Instructions for Delair Etsiline CommPact 0281413 Dehydrator

Uncontrolled on Paper

NUMBER: OPP-00030
REVISION: B
EFFECTIVE DATE: 4-7-2026
PAGE 1 of 11

4. Log into the unit.
 - a. Default Username/Password: admin/admin

Sign in

https://192.168.0.250

Username

Password

5. Choose "HTTPS Certificate" from the Main Menu

← → ↻ 🏠 🔴 Not secure https://192.168.0.250/#/home

Delair™ Dehydrator


Home

- System info
 - General
 - Network
 - Credentials
 - Event log
 - **HTTPS Certificate**
- Configuration
 - Device

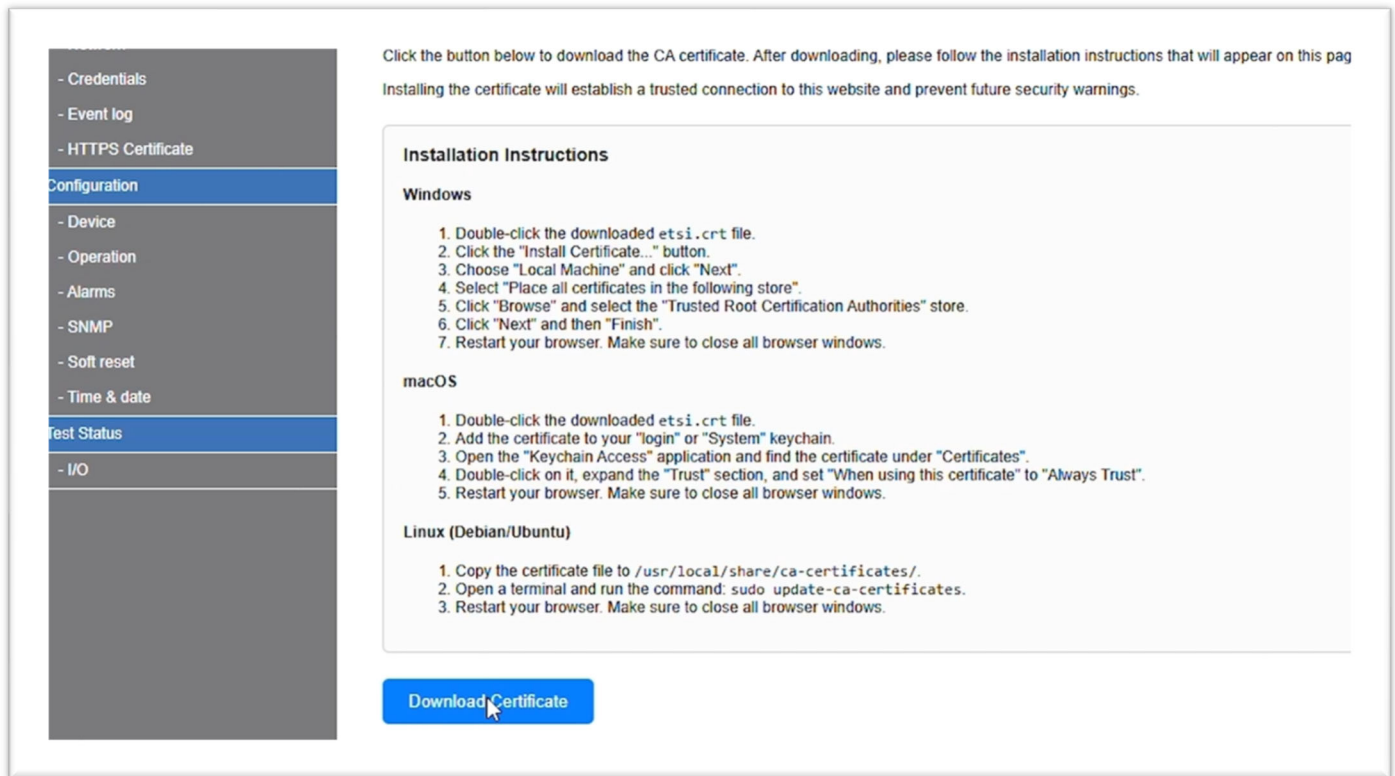
Home

Manifold

Valve Y3

	<p align="center">HTTPS Certificate Installation Instructions for Delair Etsiline CommPact 0281413 Dehydrator</p> <p align="center">Uncontrolled on Paper</p>	<p>NUMBER: OPP-00030 REVISION: B EFFECTIVE DATE: 4-7-2026 PAGE 1 of 11</p>
----------------------------------------------------------------------------------	--------------------------------------------------------------------------------------------------------------------------------------------------------------------------	-------------------------------------------------------------------------------------------

6. This document will cover the installation procedure for a PC running on the Windows operating system. The instructions to download and install the certificate on MacOS and Linux machines are shown in the web browser. Choose “Download Certificate”.



Click the button below to download the CA certificate. After downloading, please follow the installation instructions that will appear on this page. Installing the certificate will establish a trusted connection to this website and prevent future security warnings.

Installation Instructions

Windows

1. Double-click the downloaded etsi.crt file.
2. Click the "Install Certificate..." button.
3. Choose "Local Machine" and click "Next".
4. Select "Place all certificates in the following store".
5. Click "Browse" and select the "Trusted Root Certification Authorities" store.
6. Click "Next" and then "Finish".
7. Restart your browser. Make sure to close all browser windows.

macOS

1. Double-click the downloaded etsi.crt file.
2. Add the certificate to your "login" or "System" keychain.
3. Open the "Keychain Access" application and find the certificate under "Certificates".
4. Double-click on it, expand the "Trust" section, and set "When using this certificate" to "Always Trust".
5. Restart your browser. Make sure to close all browser windows.

Linux (Debian/Ubuntu)

1. Copy the certificate file to /usr/local/share/ca-certificates/.
2. Open a terminal and run the command: sudo update-ca-certificates.
3. Restart your browser. Make sure to close all browser windows.

[Download Certificate](#)

7. File “etsi.crt” will be downloaded. Double-click the downloaded file and choose “Open”.

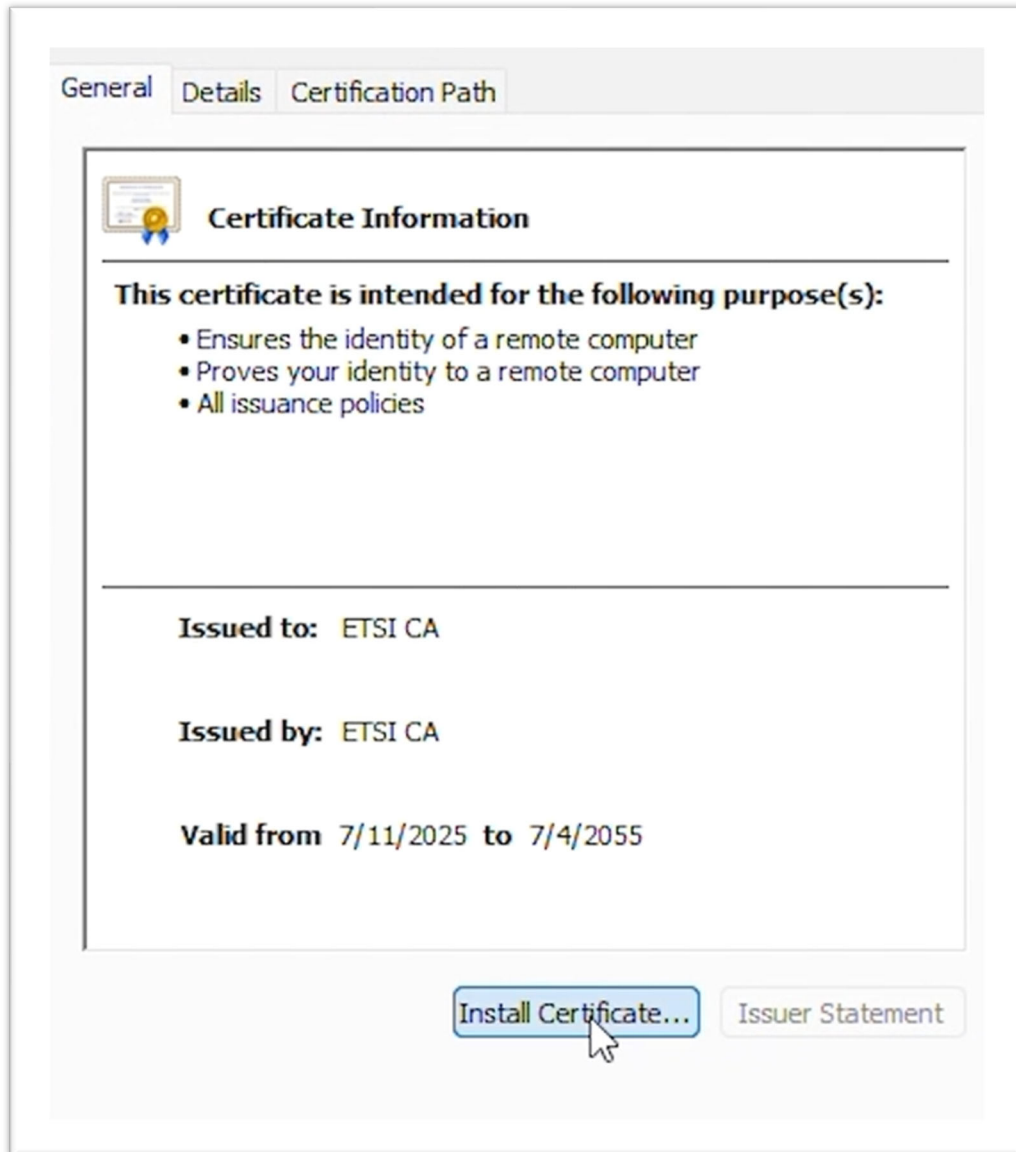



**HTTPs Certificate Installation Instructions for
Delair Etsiline CommPact 0281413 Dehydrator**

Uncontrolled on Paper

NUMBER: OPP-00030
REVISION: B
EFFECTIVE DATE: 4-7-2026
PAGE 1 of 11

8. Click "Install Certificate"



	HTTPs Certificate Installation Instructions for Delair Etsiline CommPact 0281413 Dehydrator Uncontrolled on Paper	NUMBER: OPP-00030 REVISION: B EFFECTIVE DATE: 4-7-2026 PAGE 1 of 11
----------------------------------------------------------------------------------	-------------------------------------------------------------------------------------------------------------------------------------	------------------------------------------------------------------------------

9. Choose "Local Machine" and click "Next"

Welcome to the Certificate Import Wizard

This wizard helps you copy certificates, certificate trust lists, and certificate revocation lists from your disk to a certificate store.



A certificate, which is issued by a certification authority, is a confirmation of your identity and contains information used to protect data or to establish secure network connections. A certificate store is the system area where certificates are kept.


Store Location

Current User

Local Machine

To continue, click Next.

	<p>HTTPs Certificate Installation Instructions for Delair Etsiline CommPact 0281413 Dehydrator</p> <p>Uncontrolled on Paper</p>	<p>NUMBER: OPP-00030 REVISION: B EFFECTIVE DATE: 4-7-2026 PAGE 1 of 11</p>
----------------------------------------------------------------------------------	----------------------------------------------------------------------------------------------------------------------------------------	-------------------------------------------------------------------------------------------

10. Select “Place all certificates in the following store” and choose “Browse”

Certificate Store

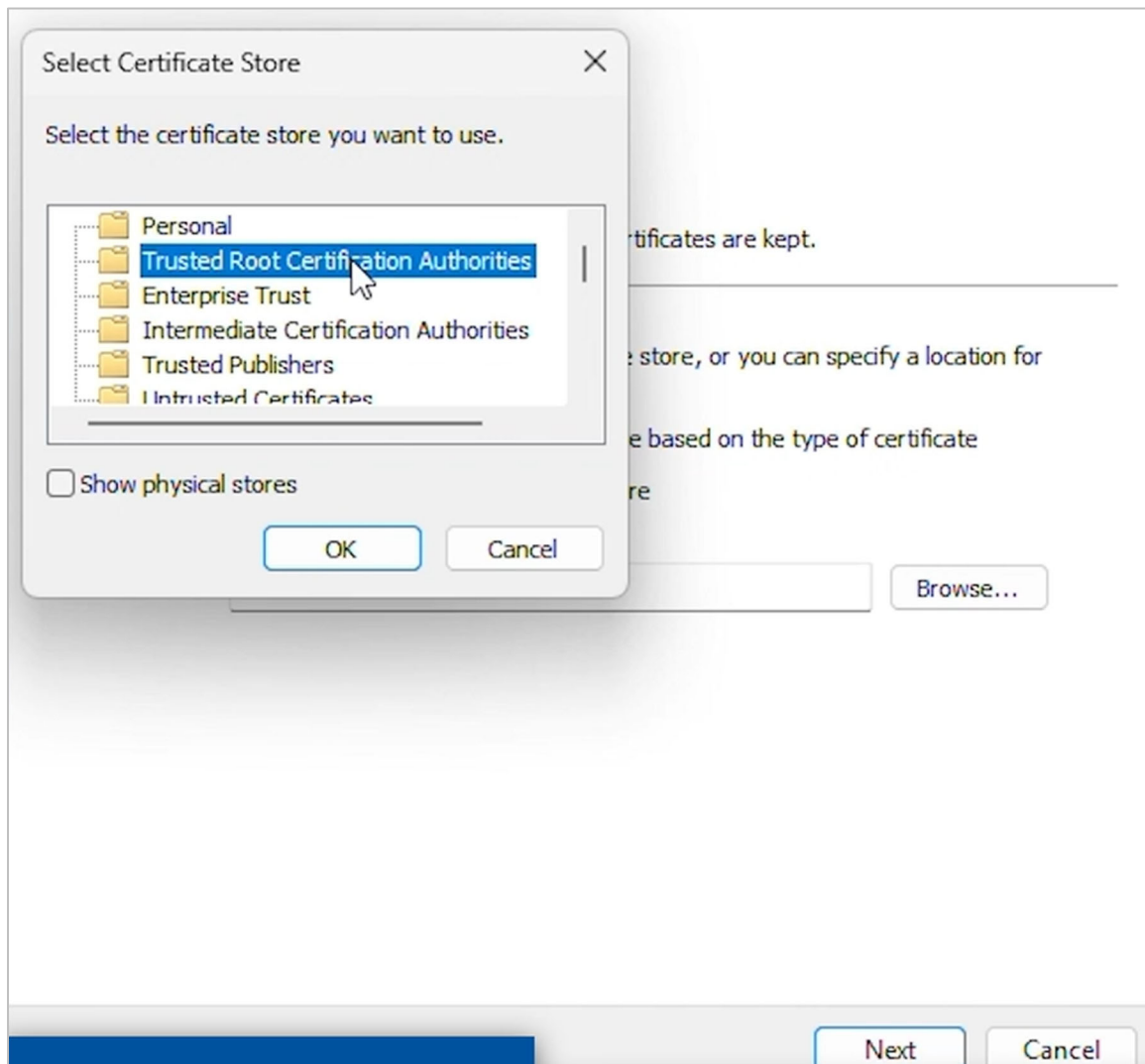
Certificate stores are system areas where certificates are kept.

Windows can automatically select a certificate store, or you can specify a location for the certificate.

Automatically select the certificate store based on the type of certificate
 Place all certificates in the following store

Certificate store:

11. Select "Trusted Root Certification Authorities" store and click "OK". Click "Next" and "Finish".





HTTPS Certificate Installation Instructions for Delair Etsiline CommPact 0281413 Dehydrator

Uncontrolled on Paper

NUMBER: OPP-00030
REVISION: B
EFFECTIVE DATE: 4-7-2026
PAGE 1 of 11

12. Click "OK" on any remaining opened prompts. Then restart your browser.

13. Reopen your browser and log back into the unit. The connection is now secure.

The screenshot shows a web browser window with the address bar displaying `192.168.0.250/#/home`. The page title is "Delair™ Dehydrator". The interface includes a sidebar menu with sections: System info, Configuration, and Test Status. The main content area is titled "Home" and features a schematic diagram of the dehydrator system. The diagram shows a manifold at the top with six valves, connected to a central line that passes through Valve Y3. This line then branches into two paths, each leading to a compressor (Compressor 1 and Compressor 2) with orifices, and finally to adsorber and heater units (Adsorber & Heater 1 and Adsorber & Heater 2). A pressure reading of 0.64 PSI is shown on the right side of the diagram. To the right of the diagram, there is a "Device" status panel with the following information:

- Runtime: 69.8 hours
- Valve Y3 duty cycle: 0.0%
- Time until next phase: 02:59:38
- Duty cycle mode: Disabled
- Next phase
- Test alarm

Below the device status, it indicates "Alarms: No alarms".

14. Choose “SNMP” from Main Menu and choose the SNMP protocol for your network.
More than one version can be selected. Click “Save”.

