



# DATA SHEET

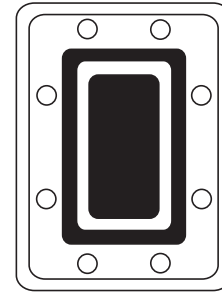
Premium connector for waveguides

## EU 90 Elliptical Waveguide

### CONNECTOR



### FLANGE TYPE



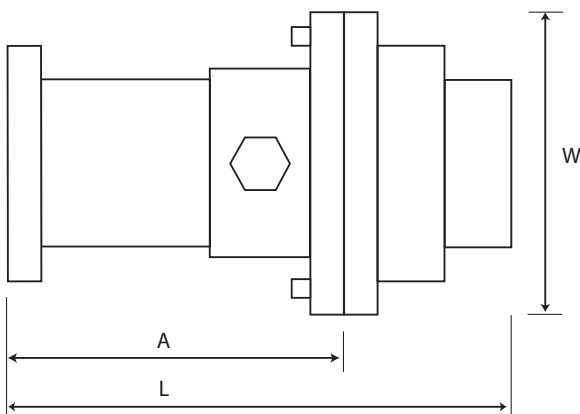
PDR 100  
CPR 90-G

#### Electrical characteristics

- **Frequency range** GHz 8.5 - 11.7
- **VSWR** (8.5 - 10.2 GHz / 10.2 - 11.7 GHz) < 1.07 / 1.03

#### Mechanical characteristics

- **Total length "L"** mm (in) 105 (4.13)
- **Length of transformer section "A"** mm (in) 67 (2.64)
- **Largest dim. across "W"** mm (in) 70 (2.76)
- **Weight** kg (lb) 0.45 (1.00)



- **Max pressure** Bar (psi) 1.25 (18.1)
- **Gas port / Degree of protection** P1/8" / IP68
- **Temperature range** °F (°C) -40 / +176 (-40 / +80)
- **Connector material** brass

### TOOL

Light-weight handheld flaring tool with saw guide



#### Part numbers

- Connector** EU90-P-CPR90-G  
EU90-P-PDR100
- Flaring Tool** EU-FT90-P